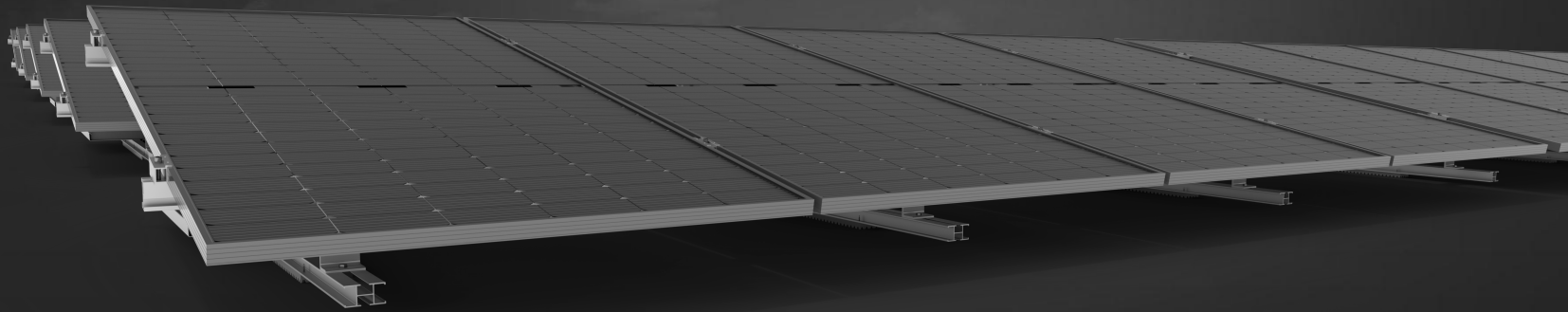


SUNRAIL™ BUDGET

FOR FLAT ROOFS



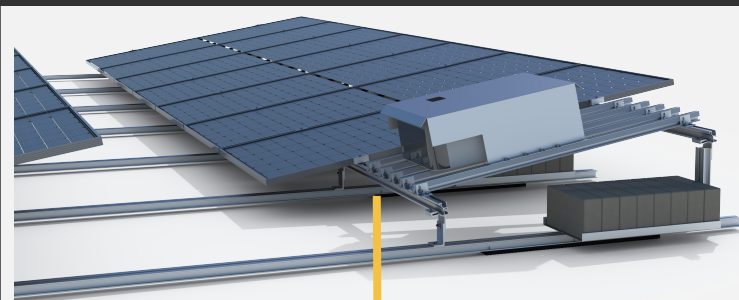
BENEFITS

- ✓ HIGHEST MODULE DENSITY :: Highest PV density to maximize the system size
- ✓ LOWER RACKING COST :: Most economical racking solution
- ✓ LOWER INSTALLATION COST :: 25% faster to install than standard racking systems
- ✓ LOWER INSURANCE COST :: Most rugged racking & engineering standards, no incident, NO INSURANCE CLAIMS

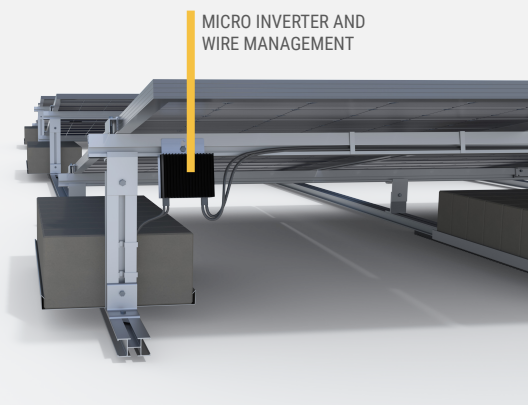


FEATURES

- All aluminum extrusions and stainless steel bolts, light and robust
- Warranty to last 20+ years
- 25% faster to install than standard racking
- 3% to 12% extra energy from bifacial
- No insurance claims, no incident
- Safest racking for the roof membrane
 - ↳ Rubber pads protection
 - ↳ No direct point load, all loads distributed on large surface
- O&M :: minimal maintenance needed
- Elevated and open back racking
 - ↳ Keeps PVs, membrane & building cooler
 - ↳ Saves on building cooling cost
 - ↳ Easier roof inspection and maintenance
- Enables more projects:
 - ↳ Lightest racking (2/3 psf) to match weak roof structures
 - ↳ Flexible racking configuration to match roof joist exact position
 - ↳ Best in class engineering services to solve any project complexity



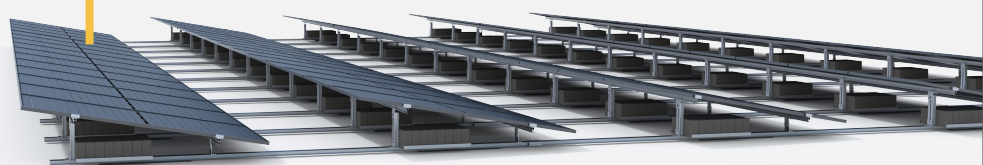
INVERTER RACKING
OPTIONS



MICRO INVERTER AND
WIRE MANAGEMENT

HIGH PROFILE RACKING

- FULLY ANCHORED
- FULLY BALLASTED
- HYBRIDE



SUNRAIL™ BUDGET

FOR FLAT ROOFS

KEY SPECIFICATIONS

Material

Aluminum rails and components, stainless steel bolts & nuts

Max Snow Loads

Can be designed for any snow loads (up to over 100 PSF)

Max Wind Loads

Can be designed for any wind loads (up to 180 MPH)

Tilt Angle

5 and 10 deg.

Module Orientation

Portrait

Module Type

Any framed PV, any frameless PV

Ballasted

Up to 100% ballasted

Anchored

Up to 100% anchored

Hybrid (ballasted & Anchored)

Hybrid ballasted and anchored system possible

Dead Loads on Roof (Ballasted)

5-10 PSF

Dead Loads on Roof (Anchored)

2-3 PSF

PV Panel Height from Roof

Customizable, 16 to 24 inches

Interrow Distance

Customizable, standard at 20 deg shading angle

Grounding

Self-bonding PV clamps, UL 2703 listed

Roof Type Compatibility

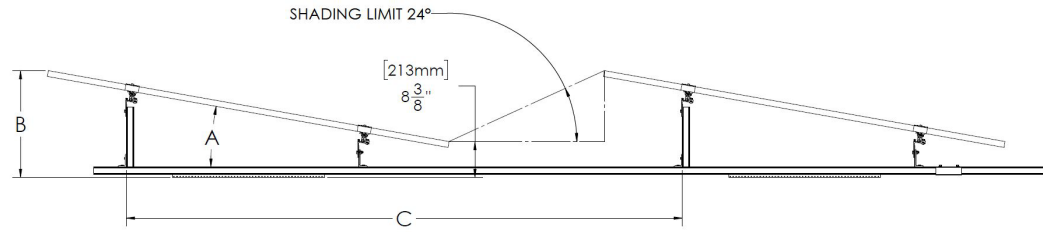
Any flat roof (built-up roof, TPO, EPDM membranes, asphalt, metal, standing seams). Up to 7° slope.

Typical Bifacial Gains

3-12% (N-Type, on white membrane. Must be optimized per project, not a guarantee.)

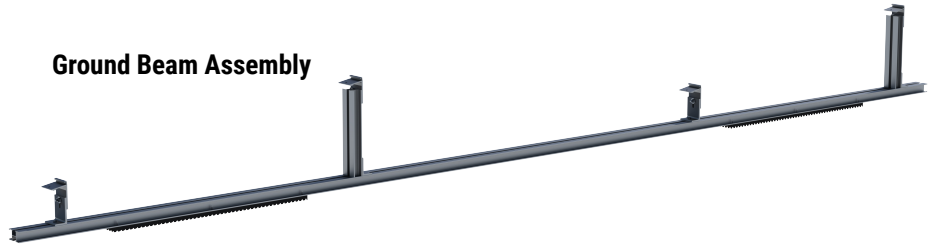
STANDARD PORTRAIT RACKING CONFIGURATION

TILT ANGLE (A)	HEIGHT (B)	PITCH (C)
5D	16" to 17"	102"
10D	24" to 25"	112"



SYSTEM COMPONENTS

Ground Beam Assembly

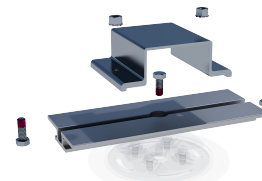


Ground Beam Linker



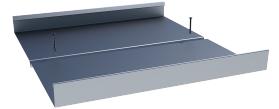
SR3-RL1

Anchor Adaptor



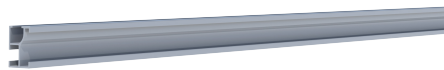
G-TH3

Ballast Pool



SR-BP2

CrossRail



SunRail Light 2-SRL2

CrossRail Linker



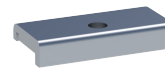
SRL-RL2

PV Clamp



SR-ZBC-FN

CrossRail Attachment



SC-SC2

3/8" Serrated Flange Bolt

