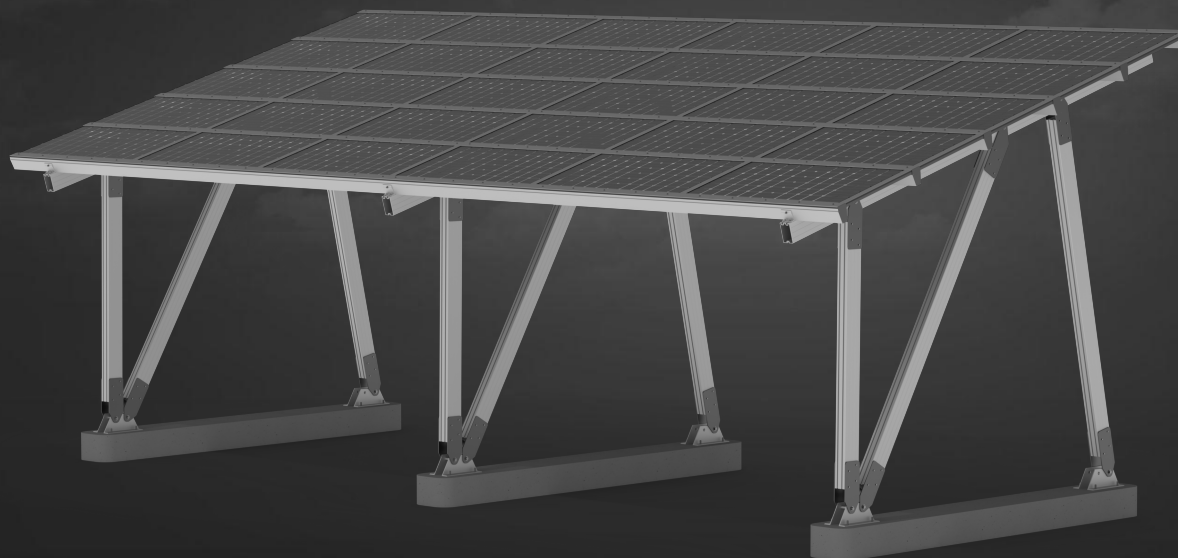


SUNPARK™ LIGHT

MODULAR SOLAR CARPORT



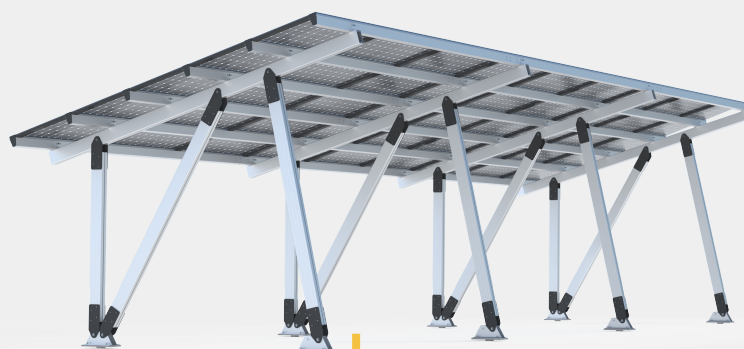
BENEFITS

- ✓ MORE PROFITABLE :: Highest energy yield (up to 20% more energy from bifacial optimization)
- ✓ LOWER PROJECT COST :: Fast to install, without heavy machinery and disruption of the property
- ✓ GREAT AESTHETICS :: Great look taking advantage of the bifacial PVs with wire hidden within structure
- ✓ MODULAR SYSTEM :: Each unit covers 2 parking spaces (18 feet) and units can be added indefinitely



FEATURES

- All aluminum extrusions and stainless steel bolts, light and robust
- Warranty to last 20+ years
- 10% to 20% extra energy from bifacial
- Modular design :: 2 cars coverage per module (18 feet)
- Perfect match for EV charging stations
- Water & wire managed canopy
- Peace of mind installation
 - Helical or screw piles preferred
 - No disruption of the parking lot, no digging
 - All parts can be handled by hand, no heavy machinery required
- O&M :: minimal maintenance needed



SunPark Light 2 parking spaces,
perfect match for EV charging

SunPark Light 4 parking spaces,
with concrete foundation



SunPark Light 6 parking spaces,
installed with helical piles



SUNPARK™ LIGHT

MODULAR SOLAR CARPORT

KEY SPECIFICATIONS

Material

Aluminum structure and components, stainless steel bolts & nuts

Max Snow Loads

Can be designed for any snow loads (up to over 100 PSF)

Max Wind Loads

Can be designed for any wind loads (up to 180 MPH)

Tilt Angle

10 to 30 (15 typical)

Module Orientation

Landscape

Module

Any framed PV, any frameless PV

Water Management

Water managed with rubber gaskets

Configuration

Single row parking coverage or dual rows with back to back carport configuration

Foundation Type

Helical piles, screw piles or concrete footing

Installation

100% aluminum structure, super light, all parts can be manipulated by hand. Can be assembled without heavy machinery.

Module Height from Ground

Customizable, 12 to 14.5 feet

Grounding

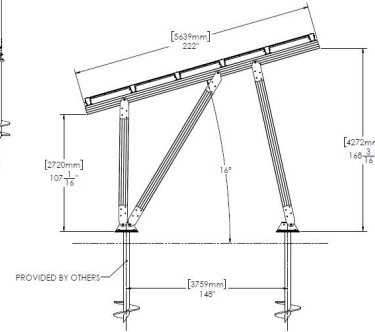
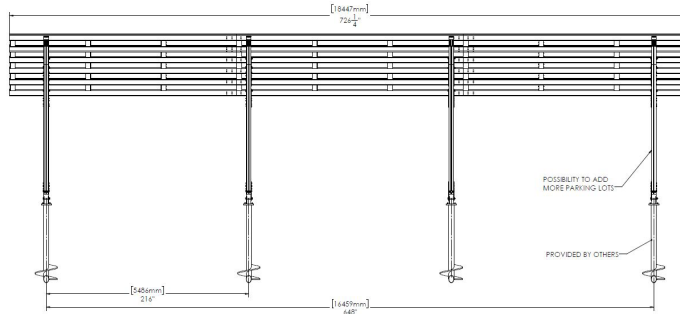
Self-bonding PV clamps, UL 2703 listed

Typical Bifacial Gains

10-20% (depending on location and orientation)

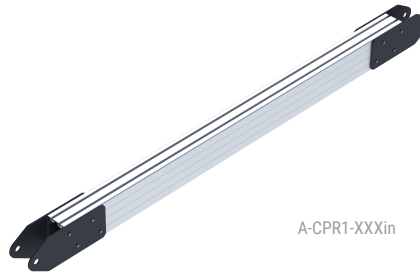
STANDARD CONFIGURATION

CARPORT UNIT	PARKING SPACES	TOTAL WIDTH	QUANTITY OF FOUNDATIONS
1	2	18 FT	2
2	4	36 FT	3
3	6	54 FT	4

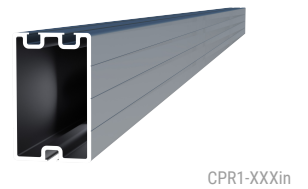


SYSTEM COMPONENTS

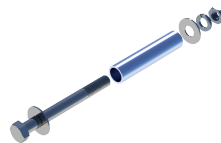
Structural Beam Assembly



Cross Beam



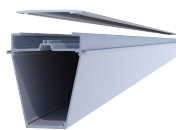
Hardware



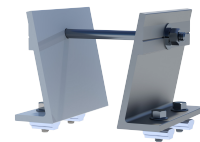
Attachment Angle



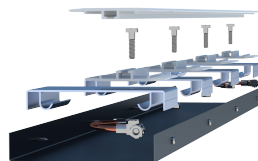
Top beam assembly



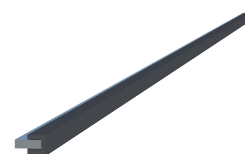
Angle clamp



Wire Guard



Filler



End Cap

