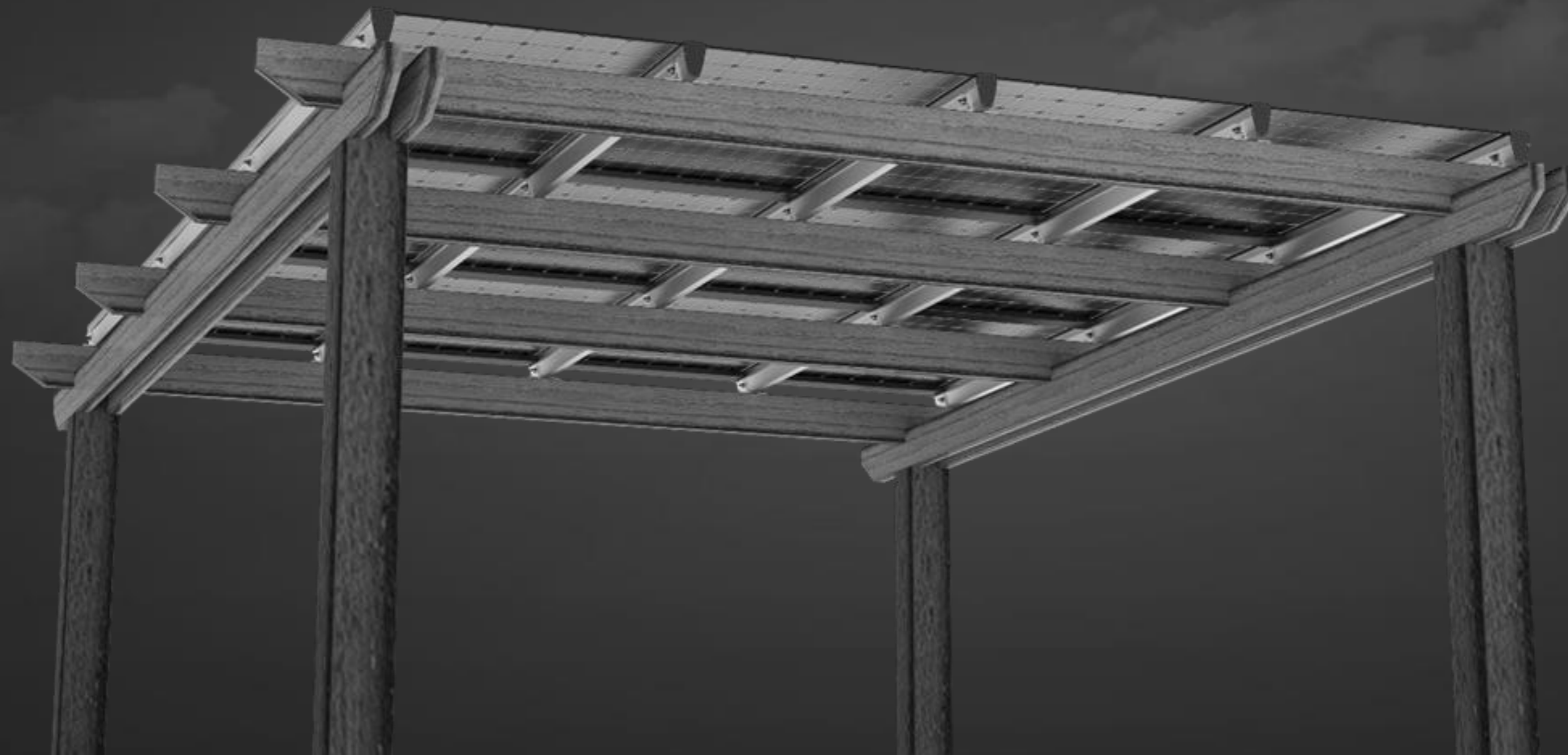


SUNSHADE™ PERGOLA

MODULAR SOLAR PERGOLA



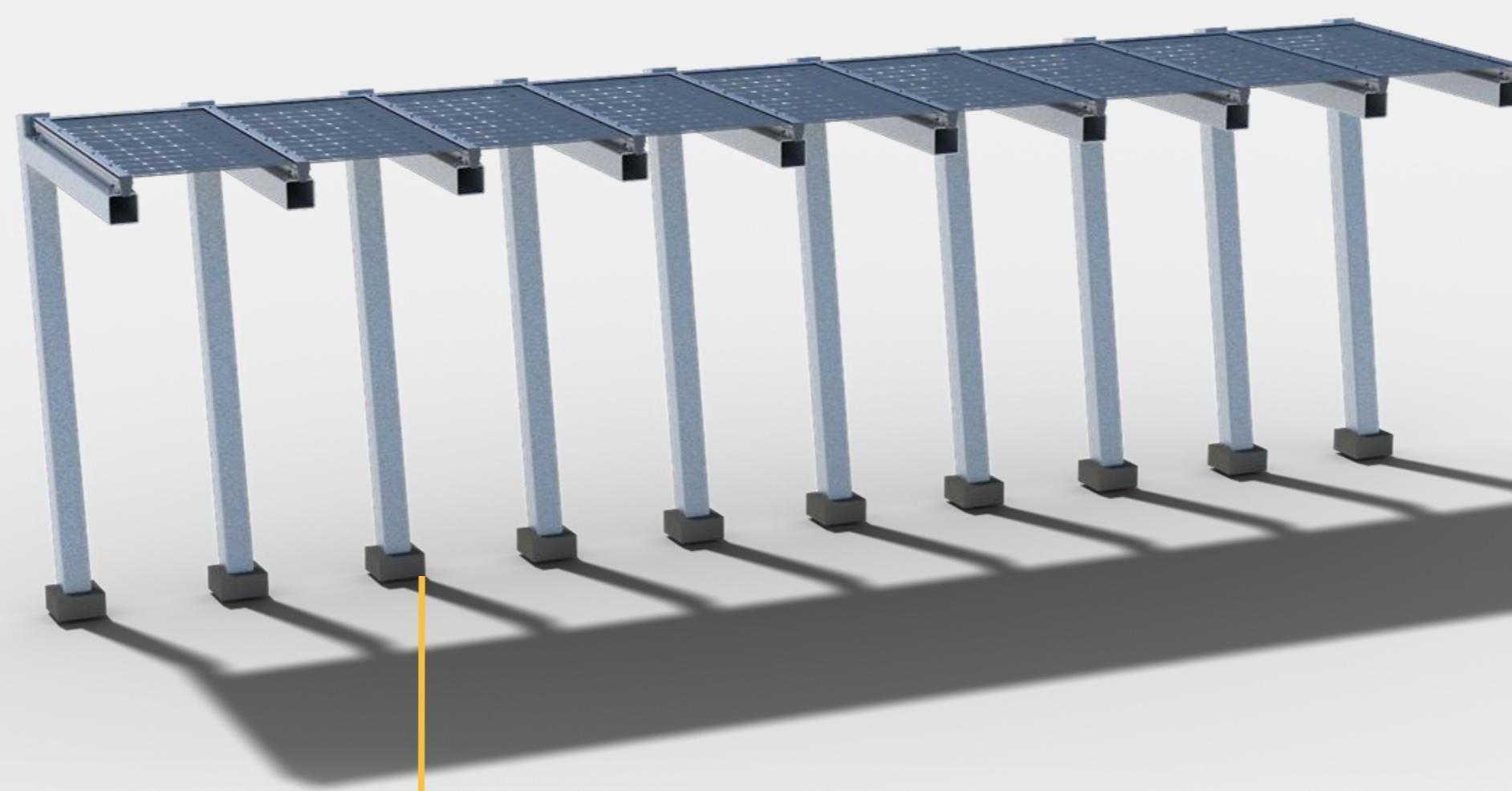
BENEFITS

- ✓ PROTECTION FROM THE ELEMENTS :: Offers protection from the sun, the rain and snow (water management system)
- ✓ GREAT AESTHETICS :: Great look taking advantage of the bifacial PVs with wire hidden within structure
- ✓ EASE OF INSTALLATION :: Aluminum made, all parts can be lifted by hand and easily connects together
- ✓ MODULAR DESIGN :: Can be adapted to fit any pergola size
- ✓ MORE PROFITABLE :: Highest energy yield (up to 20% more energy from bifacial optimization)



FEATURES

- All aluminum extrusions and stainless steel bolts, light and robust
- Warranty to last 20+ years
- 10% to 20% extra energy from bifacial
- Modular design :: configuration can be adapted to desired pergola size
- Perfect match for residential pergolas, commercial terraces
- Can integrate both framed and frameless PVs
- Water & wire managed pergola
- Peace of mind installation
 - ↳ All parts can be handled by hand, no heavy machinery required
- O&M :: minimal maintenance needed



SunShade Pergola can be used for walkways

SunShade Pergola can be installed on any type of structure



SunShade Pergola is ideal for outdoor terraces



SUNSHADE™ PERGOLA

MODULAR SOLAR PERGOLA

KEY SPECIFICATIONS

Material

Aluminum structure and components, stainless steel bolts & nuts

Max Snow Loads

Can be designed for any snow loads (up to over 100 PSF)

Max Wind Loads

Can be designed for any wind loads (up to 180 MPH)

Tilt Angle

Variable

PV Panel Orientation

Landscape on rails

Module

Any framed PV, any frameless PV

Water Management

Water managed with rubber gaskets

Configuration

Variable pergola size to match the structure size

Structure Type Compatibility

Any wood or metal structure with compatible span

Installation

100% aluminum structure, super light, all parts can be manipulated by hand. Can be assembled without heavy machinery.

PV Panel Height from Ground

Variable

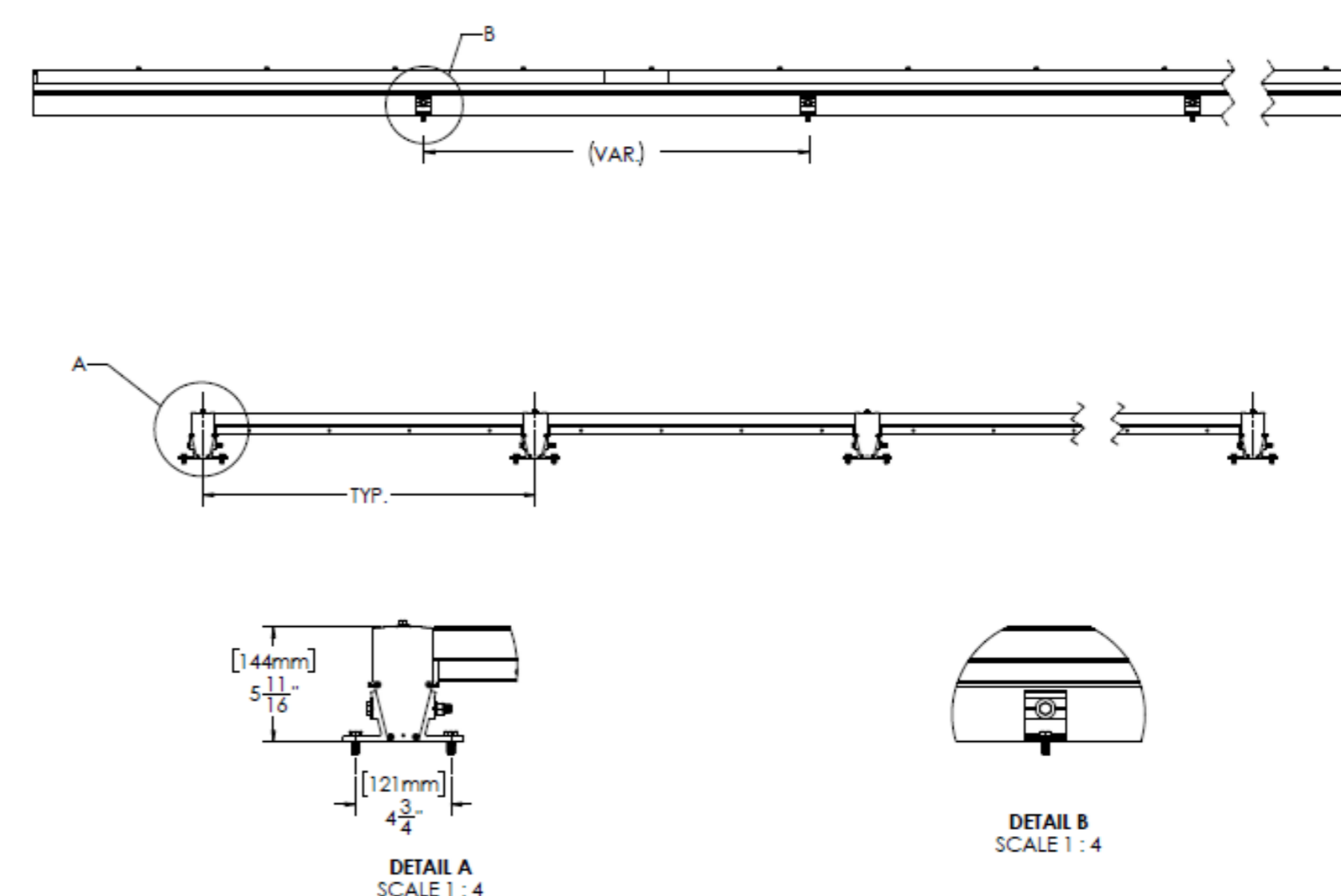
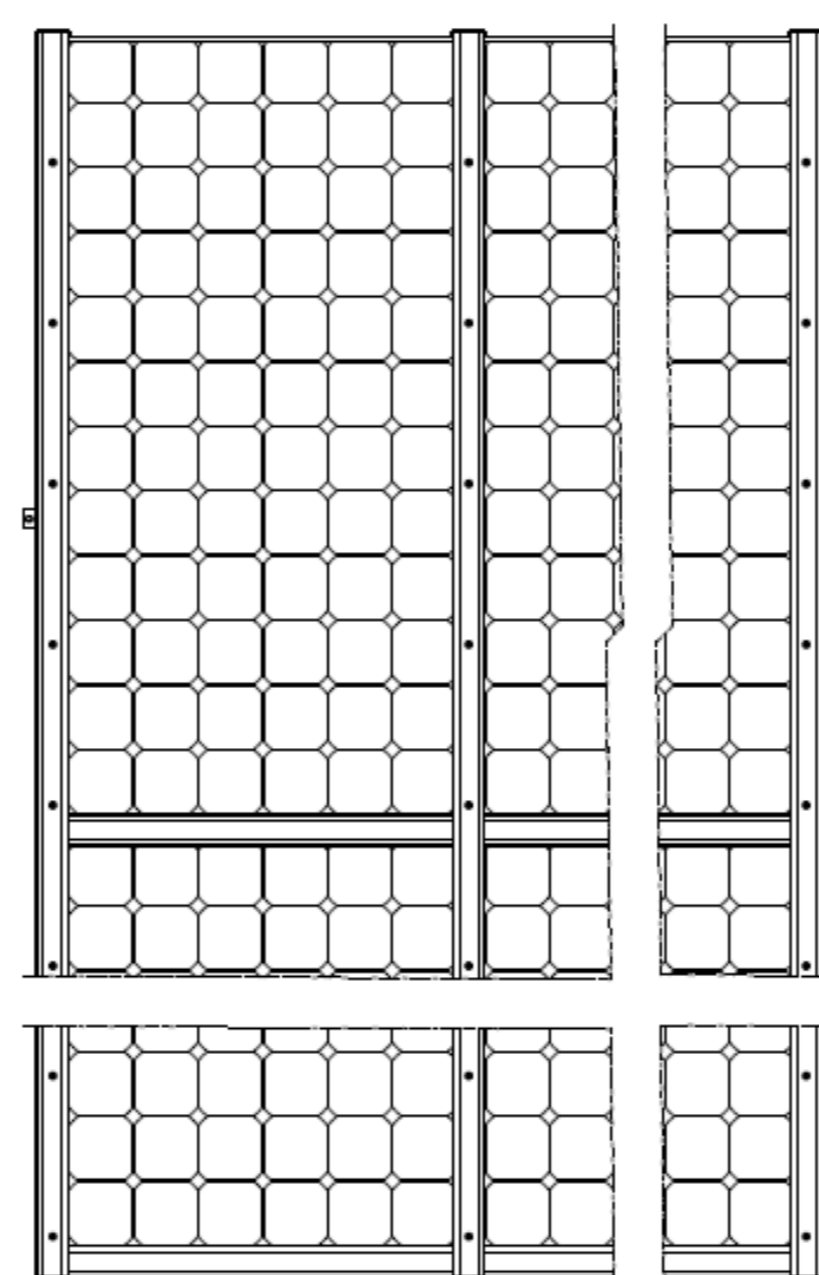
Grounding

Self-bonding PV clamps, UL 2703 listed

Typical Bifacial Gains

5-25% (depending on location and orientation)

opsun

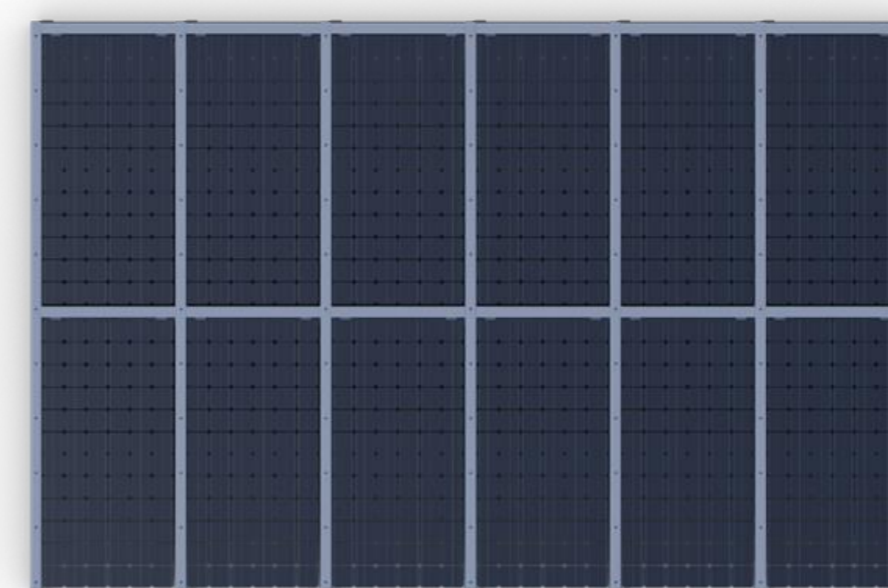


STANDARD CONFIGURATION

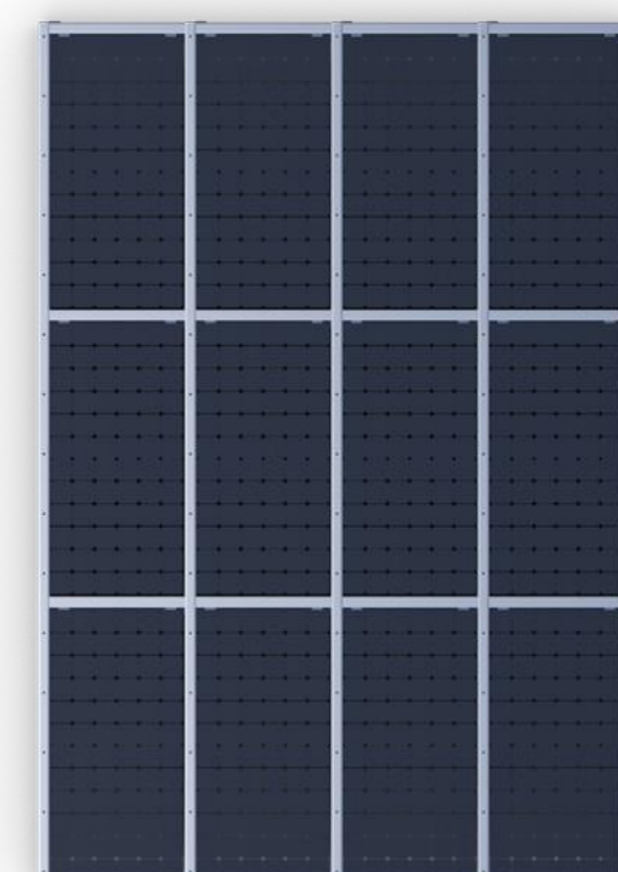
1 PANEL ROW



2 PANELS ROWS

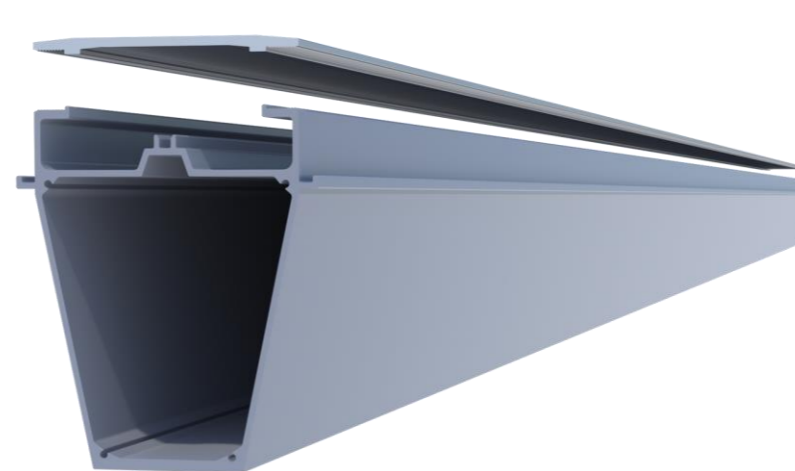


3 PANELS ROWS



SYSTEM COMPONENTS

Top beam assembly



G-CP-BA

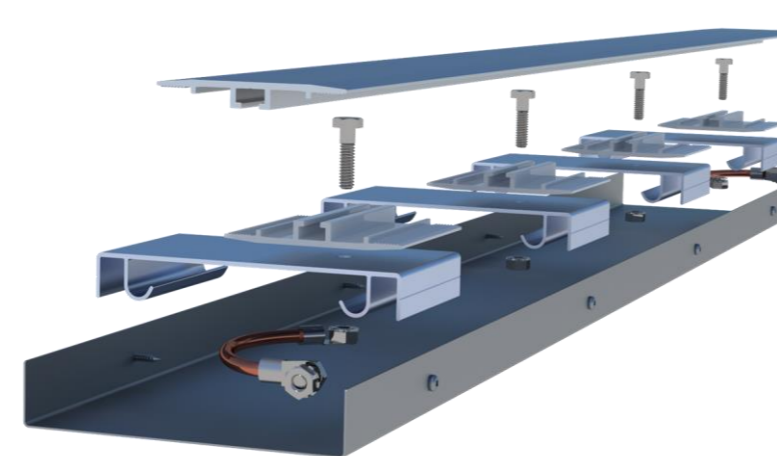
Anchor assembly

(Attache can varied)



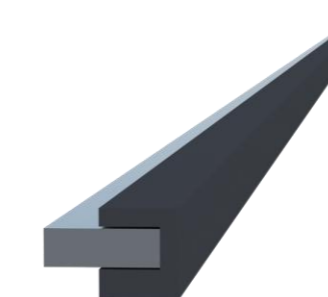
G-CPR4-AC1

Wire Guard



G-CP-WG-XXXmm

Filler



FILLER

End Cap



CP-EC1

opsun Systems Inc.

www.opsun.com

418-651-4040

