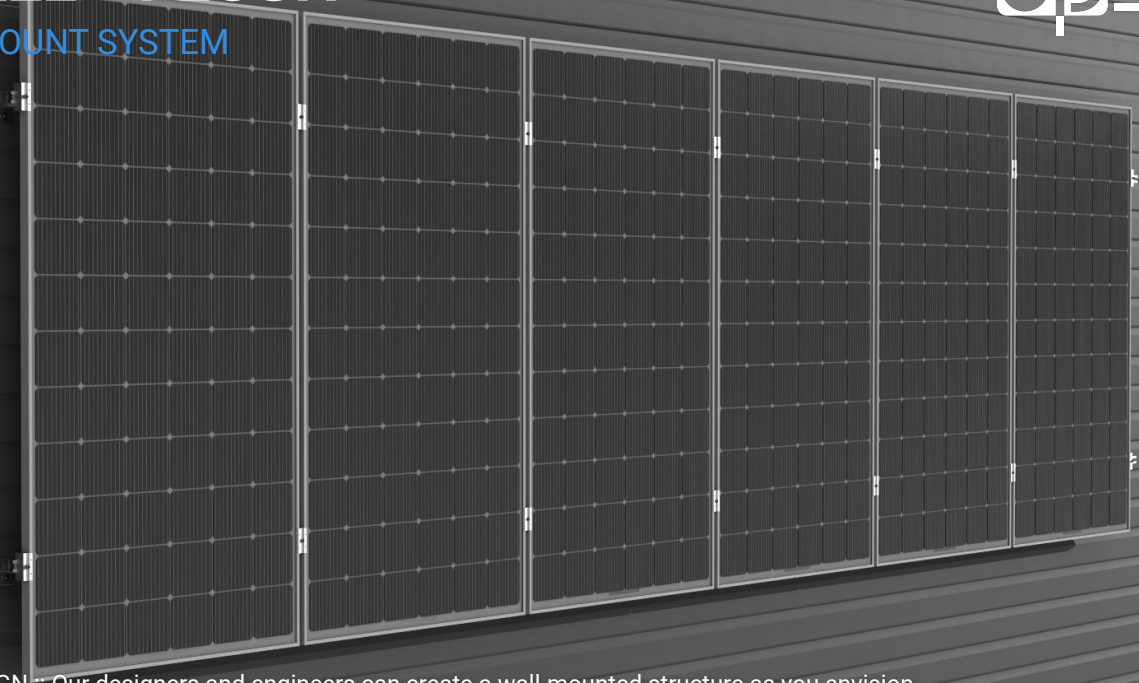


SUNWALL™ FLUSH

FLUSH WALLMOUNT SYSTEM



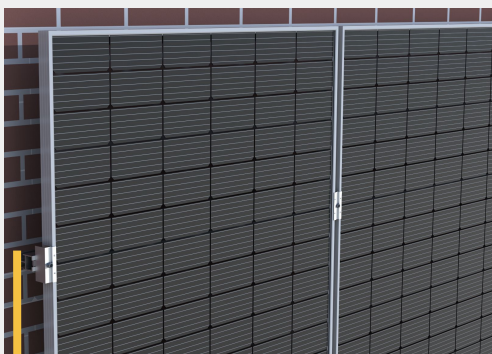
BENEFITS

- ✓ FREEDOM OF DESIGN :: Our designers and engineers can create a wall-mounted structure as you envision.
- ✓ COMPLETE TURN-KEY ENGINEERING SERVICES:: We provide detailed, project-specific plans that details installation steps. We can provide a P. Eng. Stamp for all U.S. states and Canadian Provinces.



FEATURES

- All aluminum extrusions and stainless steel bolts, light and robust
- Warranty to last 20+ years
- No insurance claims, no incident
- O&M :: minimal maintenance needed
- Wire managed
- Better PV panel protection with strong rails along PV frame
- Enables more projects:
 - Best in class engineering service to solve any project complexity

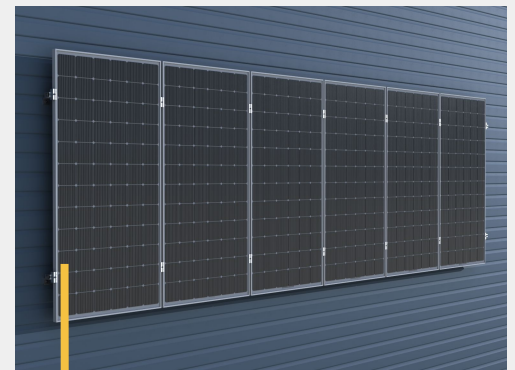
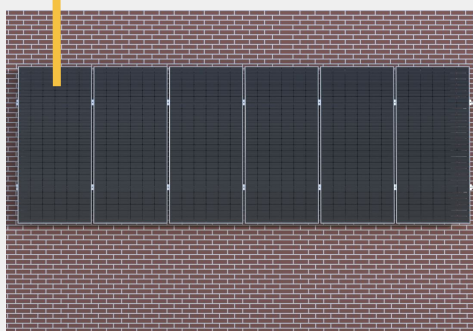


SMART DESIGN

Our experts design innovative photovoltaic structures adapted to any type of wall, with zero inclination and portrait or landscape orientation. This design preserves the wall's integrity by reducing exposure to stresses, such as wind and snow loads, which do not accumulate on the panel surface.

AESTHETIC APPEARANCE

The Wall Mount Flush structures seamlessly blend into façades, adapting to their specific features for a clean, streamlined finish. This solution mounts modules flush with the structure, delivering a harmonious design without compromising energy performance. An ideal architectural integration for modern and sustainable buildings.



COMPLETE TURNKEY ENGINEERING SERVICES

We prioritize combining aesthetics and durability to ensure a reliable installation that provides you with peace of mind. All our designs can be certified with a P.Eng stamp, recognized in Canadian provinces and U.S. states, guaranteeing compliance with applicable standards.

SUNWALL™ FLUSH

FLUSH WALLMOUNT SYSTEM

KEY SPECIFICATIONS

Material

Aluminum rails and components,
stainless steel bolts & nuts

Max Snow Loads

No snow accumulation

Max Wind Speeds

Can be designed for any wind loads (up to 180 MPH)

Tilt Angle

Flush to the wall

PV Panel Orientation

Landscape or portrait

Module

Any Framed PV

Wall Type

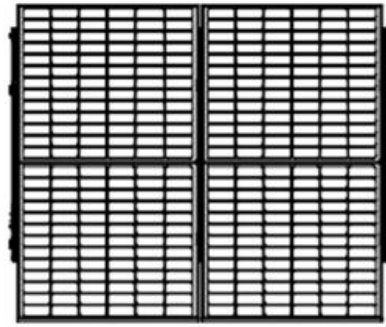
Any (masonry, concrete, wood or steel)

Grounding

Self-bonding PV clamps, UL 2703 listed

*Refer to the product installation manual for additional information.

STANDARD RACKING CONFIGURATION



SYSTEM COMPONENTS



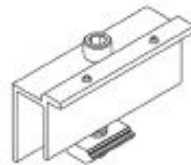
FM Rail



Angle Assembly



Base Angle



PV End Clamp



PV Mid Clamp



Rail Linker



Serrated
Flange Bolt

