

# SUNTILT™ ASPHALT

ASPHALTED ROOF



## BENEFITS

- ✓ FREEDOM OF DESIGN :: Our designers and engineers can create a tilted roof racking as you envision.
- ✓ CREATE ELEGANT STRUCTURES :: Our racking can integrate seamlessly into architectural projects. Gap between modules can be closed. Rails available in any anodization color, as required.
- ✓ COMPLETE TURN-KEY ENGINEERING SERVICES:: We provide detailed, project-specific plans that details installation steps. We can provide a P. Eng. Stamp for all U.S. states and Canadian Provinces.

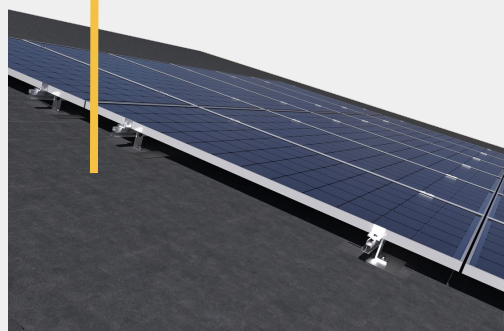


## FEATURES

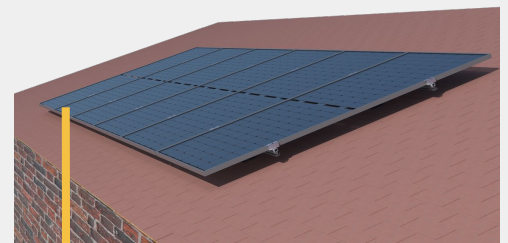
- All aluminum extrusions and stainless steel bolts, light and robust
- Warranty to last 20+ years
- No insurance claims, no incident
- O&M :: minimal maintenance needed
- Wire managed
- Better PV panel protection with strong rails along PV frame
- Enables more projects:
  - ↳ Best in class engineering service to solve any project complexity



FREEDOM OF DESIGN



ELEGANT STRUCTURES



COMPLETE TURNKEY  
ENGINEERING SERVICES

# SUNTILT™ ASPHALT

## KEY SPECIFICATIONS

### Material

Aluminum rails and components  
Stainless steel bolts & nuts

### Max Snow Loads

Designed for regions with up to  $S_s = 4.2\text{kPa}$

### Max Wind Loads

Designed for regions with up to  $q_{1/50} = 0.5\text{kPa}$

### Max Rain Loads

Designed for regions with up to  $S_r = 0.6\text{kPa}$

### PV Panel Orientation

Portrait

### PV Module

1x2, 1x4, 1x6

Panel Length : Up to 2278mm

Panel Width : Up to 1134mm

Panel Thickness : 30, 35, 40mm

### Roof type

Any roof type (Asphalt, corrugated metal (barn), standing seams, all other custom roof)

Roof Angle :  $10^\circ$  to  $30^\circ$

### Tilted Roof Attachment

A 100% direct attachment (lag bolts, hanger bolt, standing seam clamps, corrugated metal roof SMC Clamp)

### Unique Patented Solution

Corrugated Metal Roof (Barn Roofs) can use Opsun's unique patented SMC clamp (CA 2751963) that reuses the existing screw hole in the metal roof, and attaches in the strapping, for easier installation.

### Dead Loads on Roof

2-3 PSF

### PV Panel Height from Roof

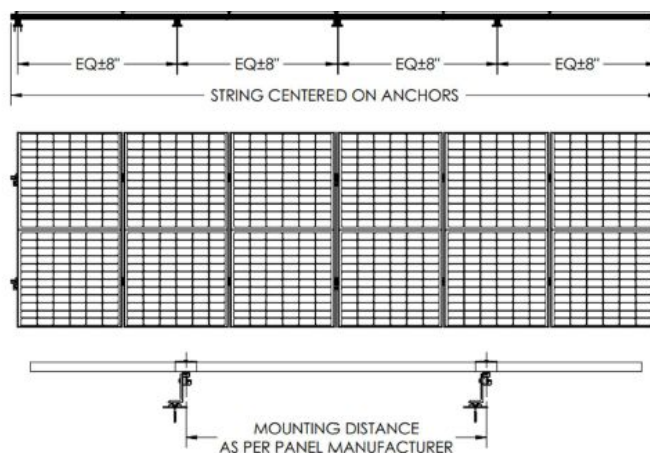
Customizable, starts at 4 inches

### Grounding

Self-bonding PV clamps, UL 2703 listed

\*Refer to the installation manual for additional details.

## STANDARD RACKING CONFIGURATION



## SYSTEM COMPONENTS



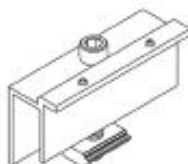
SRL Rail



Base Angle



Serrated  
Flange Bolt



PV End  
Clamp



PV Mid  
Clamp



Rail Linker



(Ultravic)



(Super Vic)

Optional  
Items



(Century Rib)



(Optimum Rib)



(Americana)

